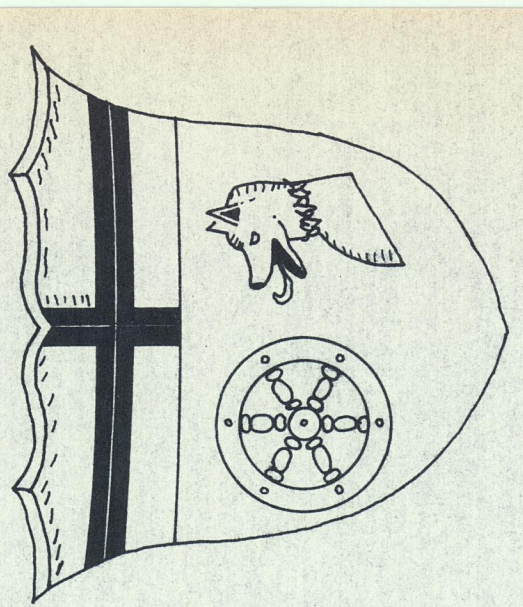
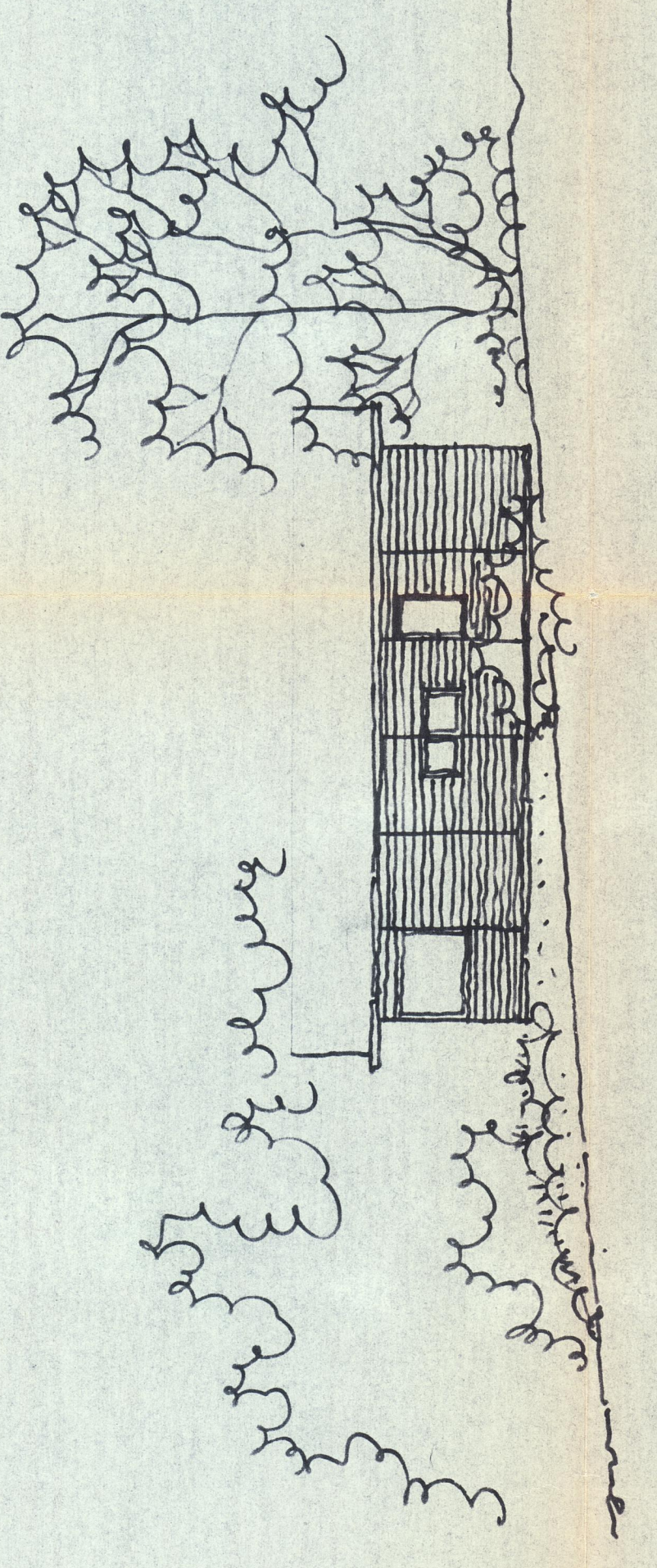
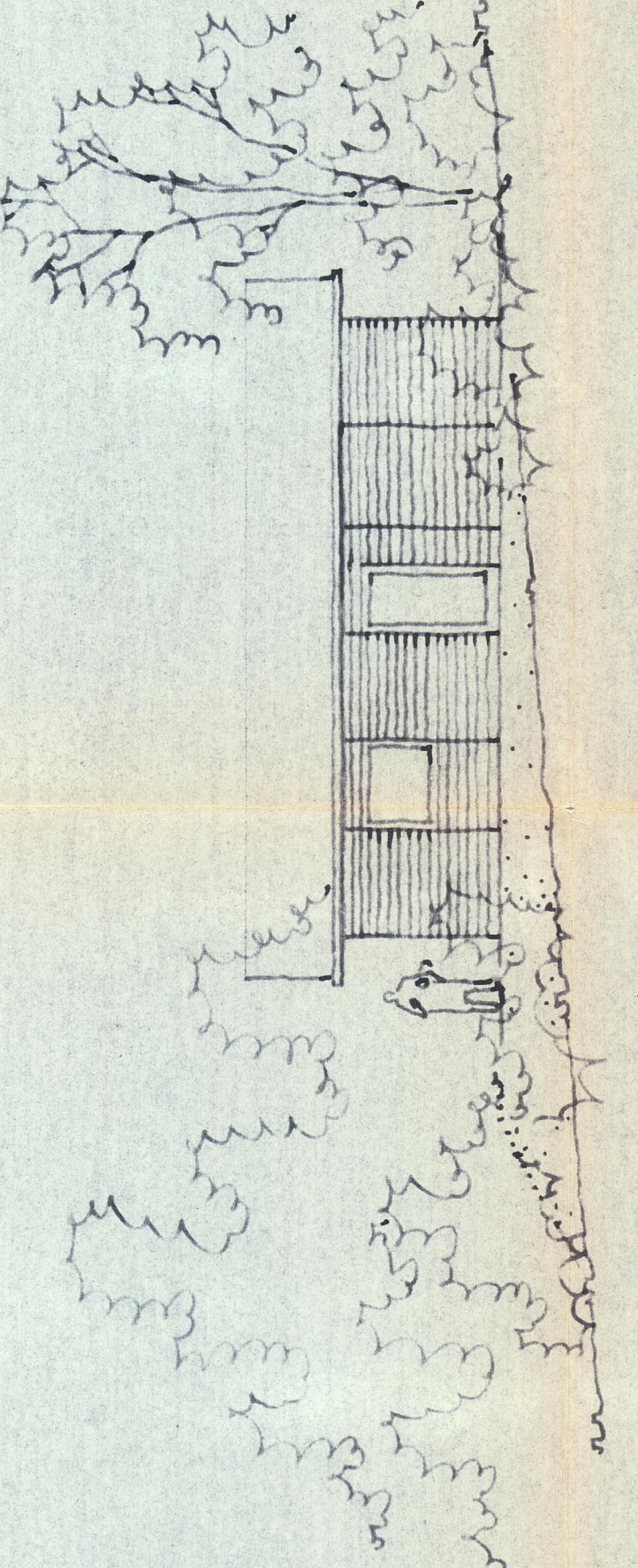
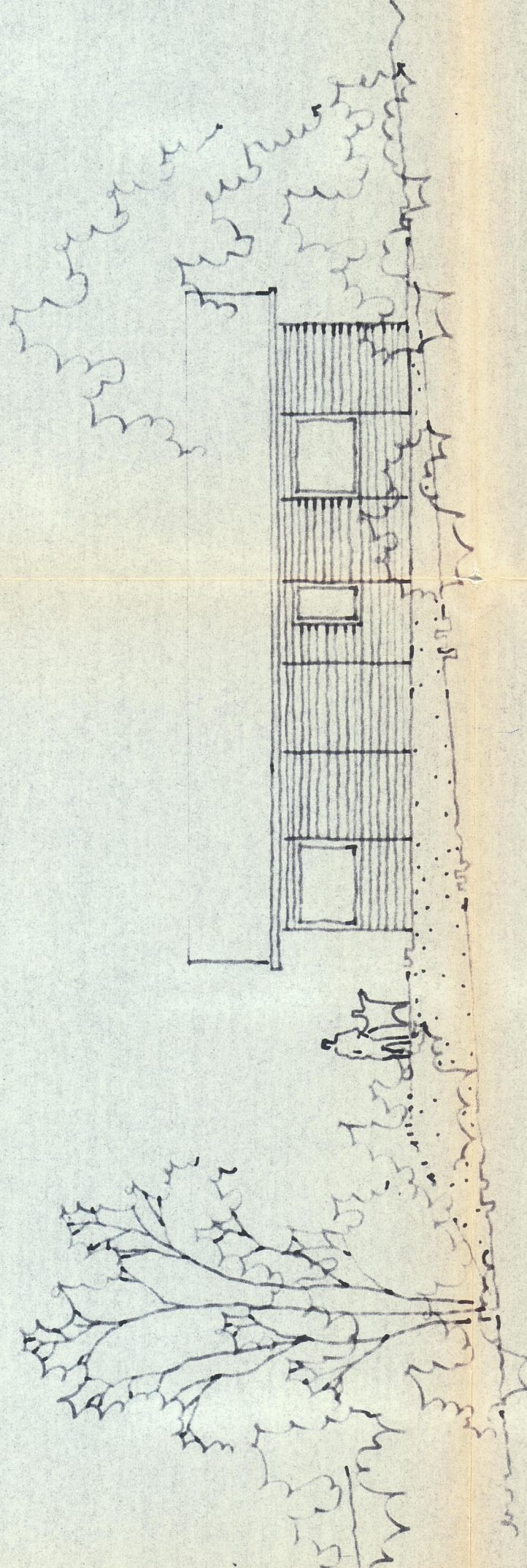
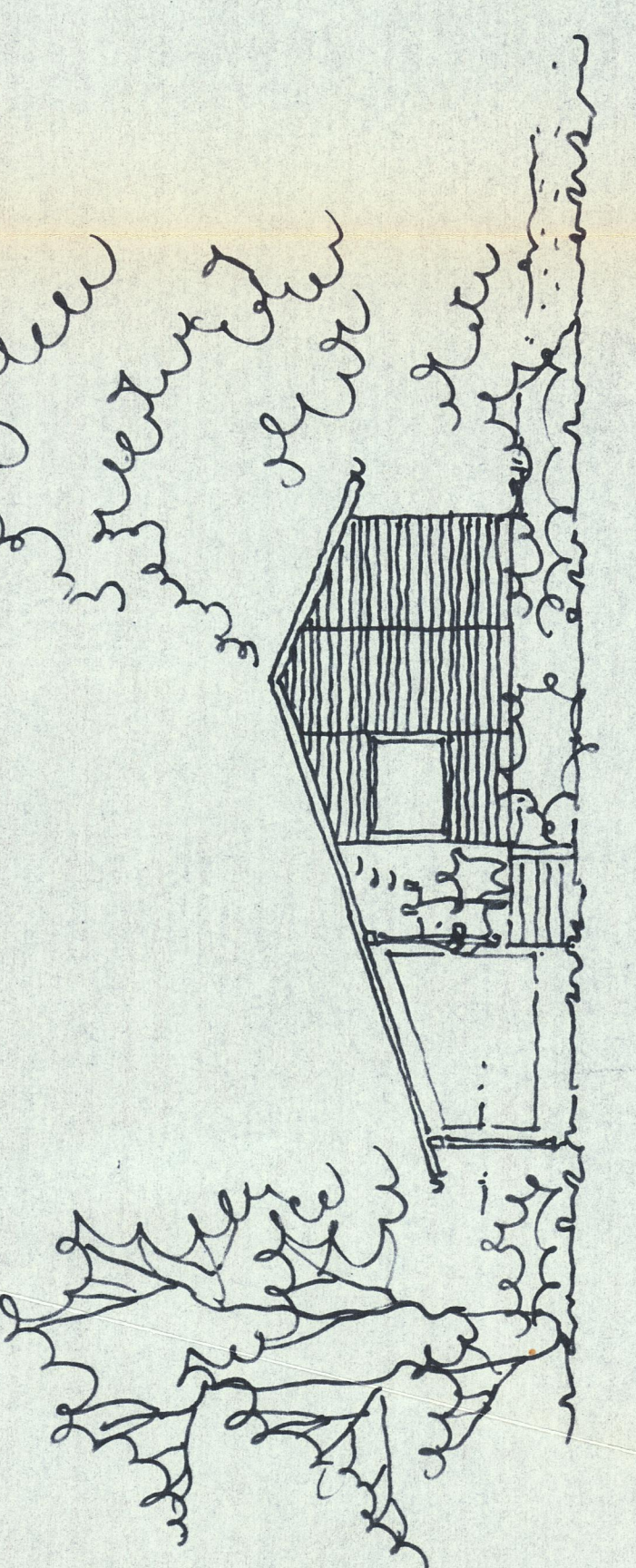
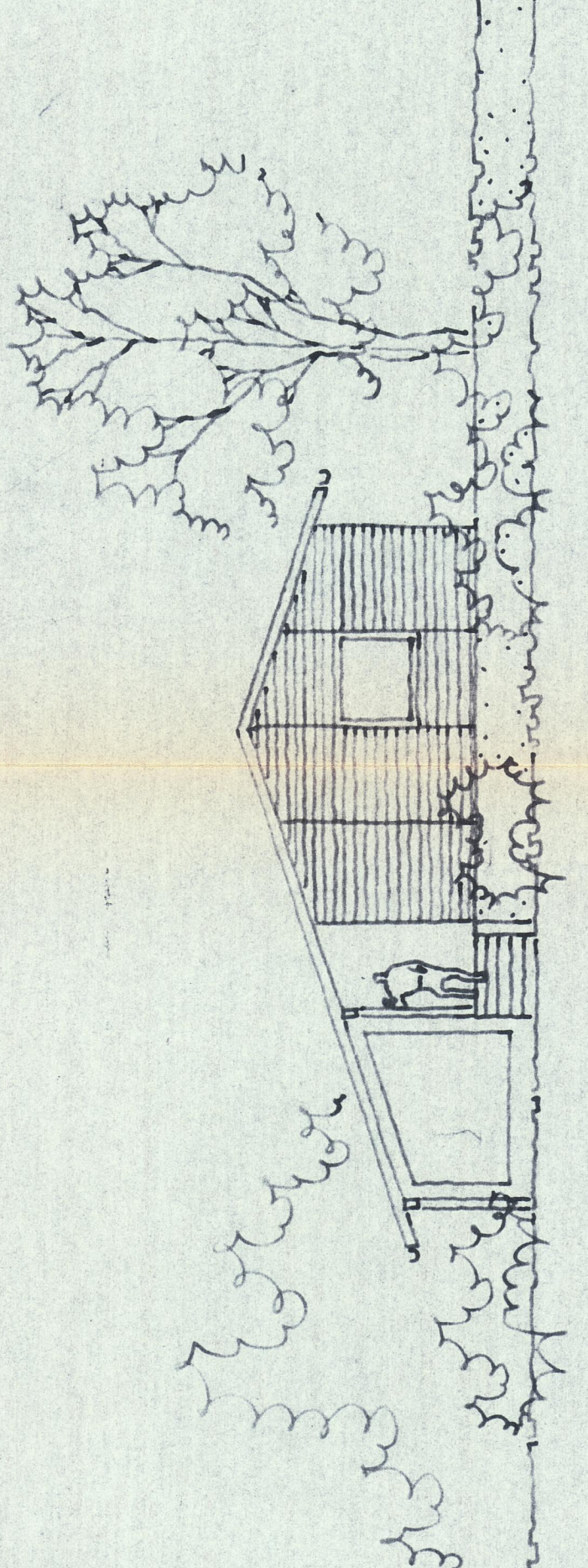
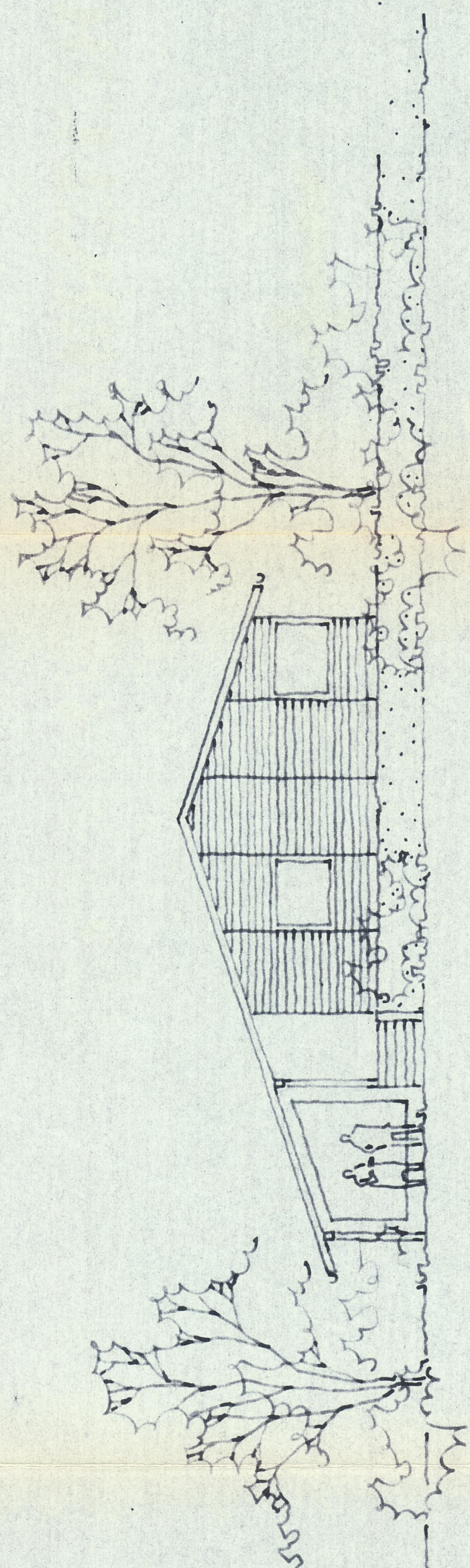


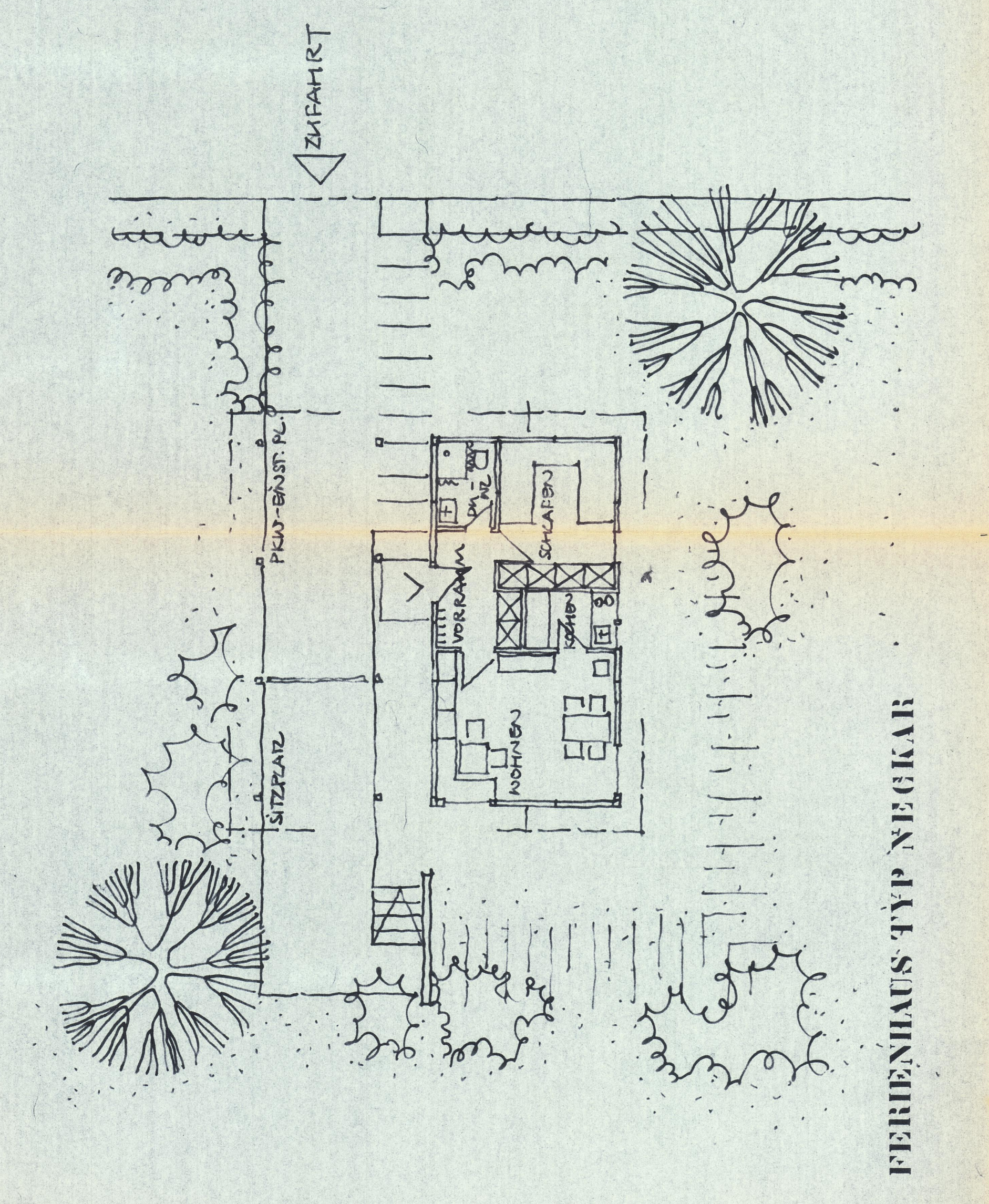
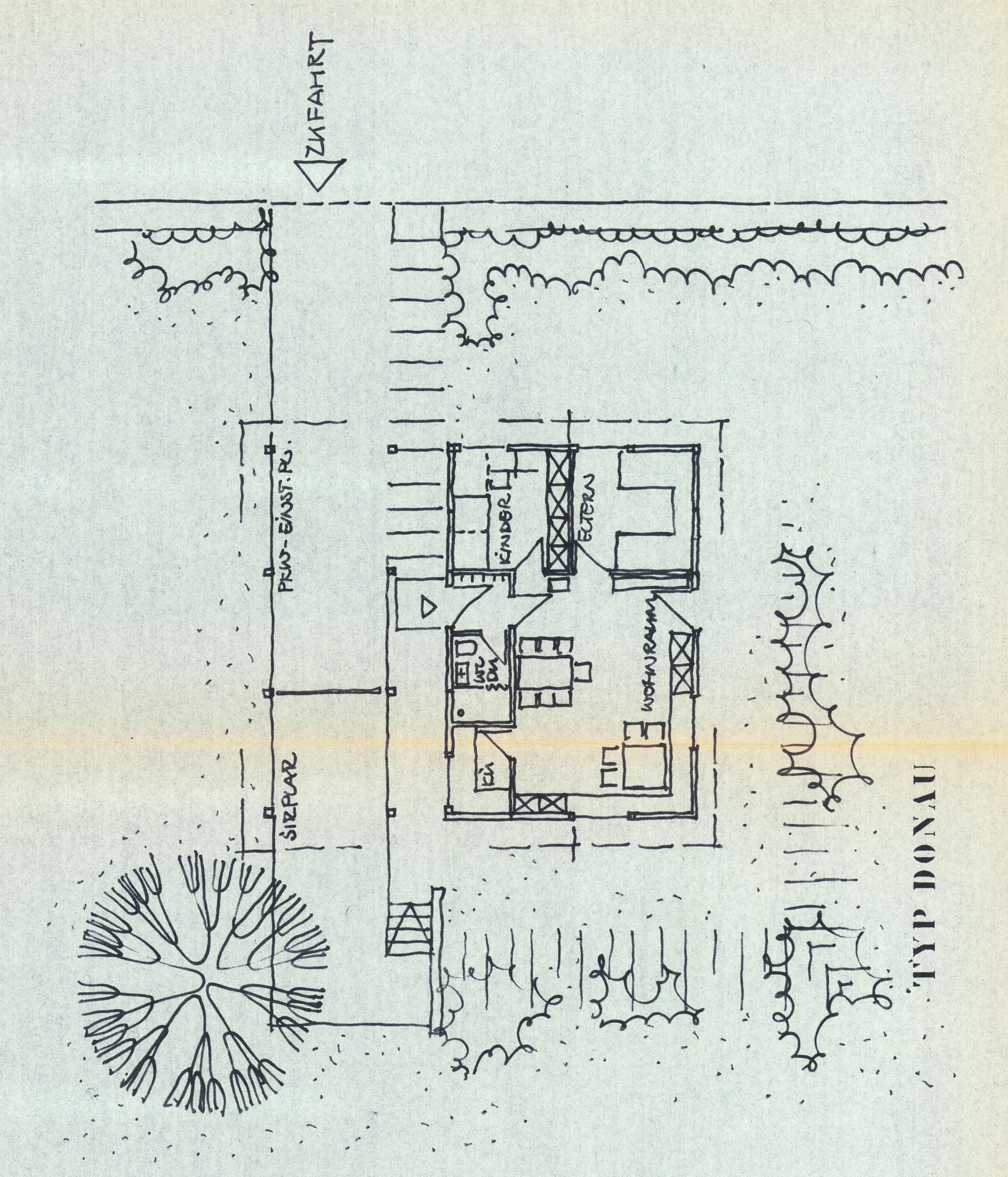
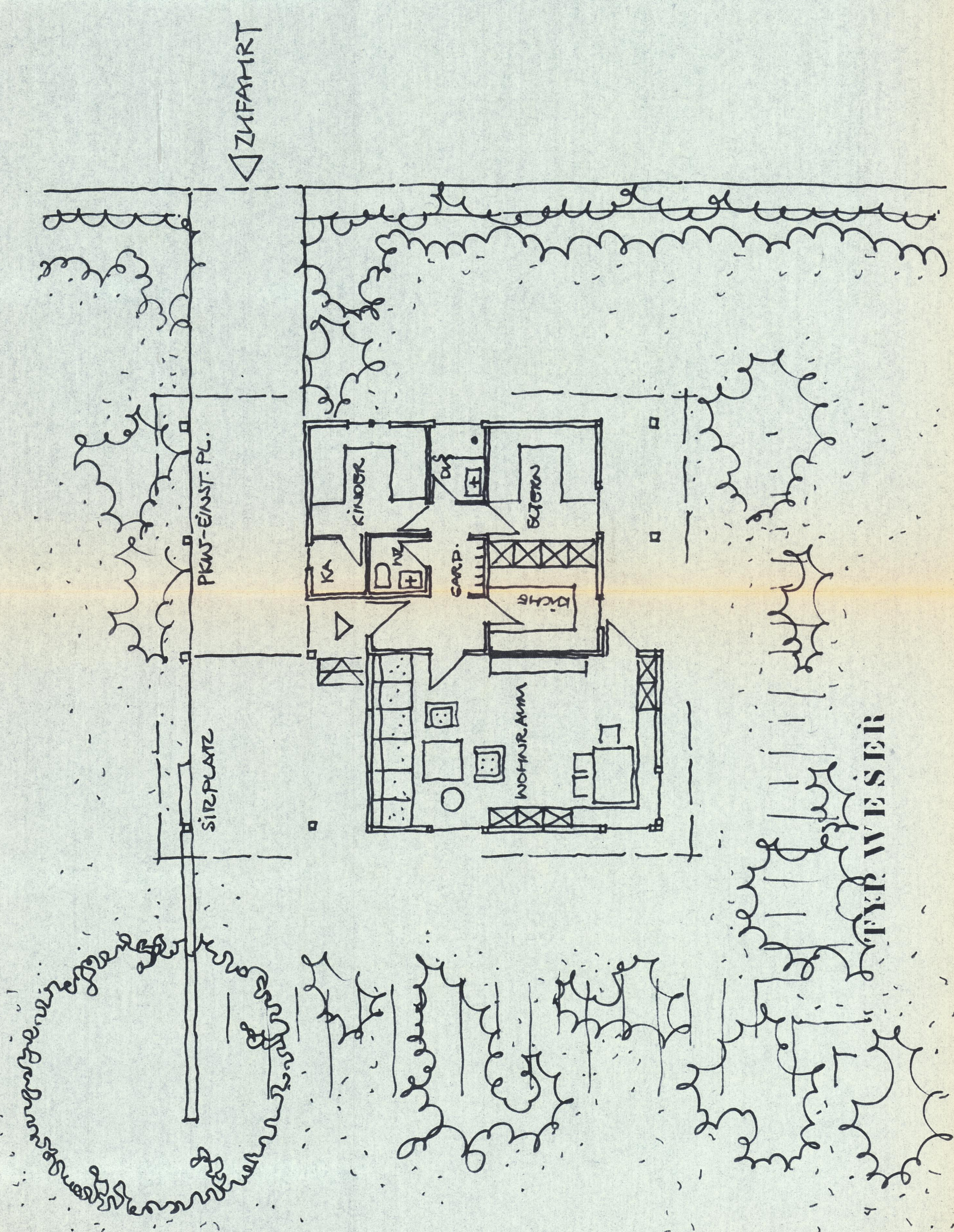
STADT MILTENBERG



FERIEN- SIEDLUNG IM ORTSTEIL MAINBULLAU



TYP NECKAR 79,5 qm WT
 IDONAU 82,85 qm WT
 WESTER 74,4 qm WT



FERIENHAUS TYP NECKAR

TYP DONAU

TYP WESTER

BEIPLAN NR. 2 - HAUSTYPEN - VORSCHLÄGE M 1:100
 BEBAUUNGSPLAN : FERIENSIEDLUNG MAINBULLAU
 STADT : MILTENBERG, ORTSTEIL MAINBULLAU
 LANDKREIS : MILTENBERG
 GEBIET : HÖHCKER
 MASSTAB : 1 : 100
 GEZ. : ARCHITECTENKAMMER SÜDBAYERN
 GFS. : ARCHITECT BDA DIPLOM-INGENIEUR
 6CTID. : 1979
 MILTENBERG, DEN 25.2.1975